

# CAVITY FIRE STOP SLAB - FS



CONCEPT CONVERSIONS LTD  
Fire, Acoustic & Thermal Insulation

## COMMERCIAL

Data Sheet 2031 v1.0.1

The CCL Cavity Fire Stop Slab- FS is a fire resistant barrier designed to prevent the spread of fire and smoke in closed state, non vented cavity constructions. Each barrier is manufactured to suit the intended cavity width.

### Description:

The CCL Cavity Fire Stop Slab FS (CFSS-FS) range is designed for use vertically and horizontally in closed state, non-vented cavities from 50mm to 450mm.

Manufactured from high density, non-combustible rock mineral wool, faced on both sides with reinforced aluminium foil, the barriers are installed either friction, or mechanically fixed under 5mm compression.

Suitable for use on slab edge, masonry and SFS wall types, the CL CFSS-FS range achieves fire resistance performance of up to 240 minutes integrity and insulation on masonry and 240 minutes integrity and 60 minutes insulation on SFS substrates\*.

The CCL CFSS-FS range is manufactured to suit the specific cavity size plus 5mm and offers an extended scope of performance\*\*

The CCL CFSS range has been tested in accordance with EN 1366-4, 2021.



\*When installed in accordance with the tested build up  
\*\*When compared to the CCL Fire Stop Slab range

## PERFORMANCE & STANDARDS

Inner Substrate	Outer Surface	Minimum Cavity Width (mm)	Maximum Cavity Width (mm)	VERTICAL		HORIZONTAL	
				Integrity (e)	Insulation (i)	Integrity (e)	Insulation (i)
AAC	AAC	50	300	60	60	60	60
AAC	AAC	50	300	90	90	90	90
AAC	AAC	50	300	120	90	120	120
AAC	AAC	50	300	180	90	180	180
AAC	AAC	50	300	240	90	240	240
SFS	AAC	50	300	60	60	60	60
SFS	AAC	50	300	90	60	90	90
SFS	AAC	50	300	120	60	120	120
SFS	AAC	50	300	240	60	240	120

Fire Test performance in accordance with BS EN 1366-4 2021 carried out at WarringtonFire - test number 540212

AAC =Autoclaved Aerated Concrete

SFS =Steel Frame with 12mm non-Combustible Cementitious board

bsi.identify

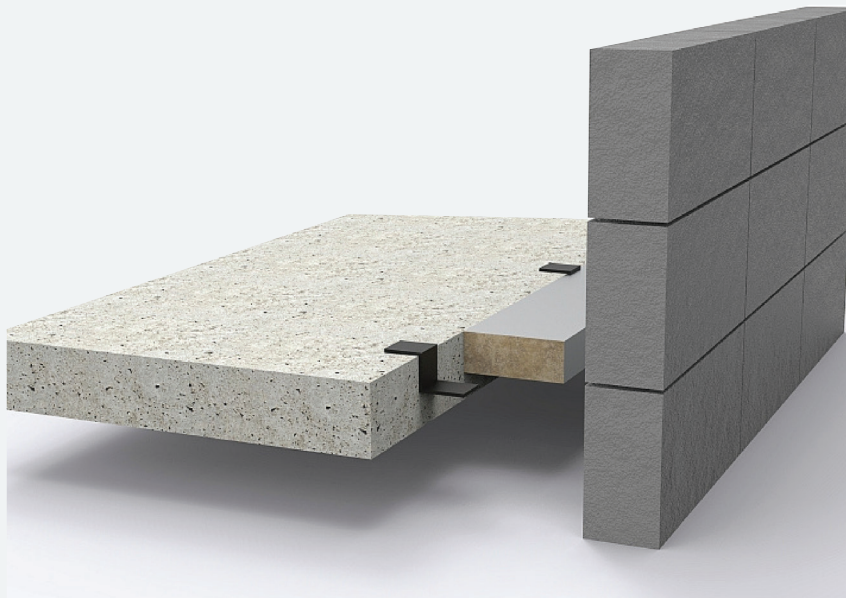
Registered manufacturer



Inner Substrate	Outer Surface	VERTICAL				HORIZONTAL	
		Minimum Cavity Width (mm)	Maximum Cavity Width (mm)	Integrity (e)	Insulation (i)	Integrity (e)	Insulation (i)
SFS	AAC	50	450	90	60	120	60

**Masonry Support System**

Inner Substrate	Outer Surface	Minimum Cavity Width (mm)	Maximum Cavity Width (mm)	PARTIAL PENETRATION HORIZONTAL		FULL PENETRATION HORIZONTAL	
				Integrity (e)	Insulation (i)	Integrity (e)	Insulation (i)
AAC	AAC	50	325	60	60	60	60
AAC	AAC	50	325	120	120	120	90



**CAVITY  
FIRE STOP  
SLAB FS**

**SIZE &  
ORDERING GUIDE**

Sizes start at 55mm and are available in increments of 1mm up to 455mm suitable for cavity widths ranging from 50mm to 450mm.

CCL CFSS-FS are supplied with the CCL FSCLIP a quantity of 2 per length. Extra clips are available to order separately.

When ordering the CCL CFSS-FS range, please use the following format:  
CFSS, followed by the integrity (e) required, followed by the insulation (i) required, followed by the required width.

e.g. CFSS 60 60 305 would be 60 minute integrity, 60 minute insulation for a 300mm cavity.



**CONCEPT CONVERSIONS LTD**  
Fire, Acoustic & Thermal Insulation

**COMMERCIAL**

Data Sheet 2031 v1.0.1

## INSTALLATION

The CCL CFSS-FS is installed under compression utilising the CCL Fire Stop Clips (FSCLIP).

When installed vertically and providing the barrier is supported at the base and the internal and external surfaces are completed as the barrier is installed, the CCL FSCLIP may be omitted.

When installing horizontally at floor slab edge, the CCL FSclip should be bent into a Z shape and penetrate the firestop by a minimum of 60% of its overall width at a rate of 2 per length (approx. 300mm from end to end).

Lengths of the CFSS-FS should be tightly abutted to each other and there should be no gaps present between the barrier and the substrate.

The barrier should be securely fitted into the cavity ensuring it is compressed by approximately 5mm and the ends form a tight butt joint.

The fixing clip should then be mechanically fixed to the floor slab or inner leaf.

All joints should be sealed using 100mm CCL Foil Tape.

## PRODUCT IDENTIFICATION

Prior to installation, the CCL CFSS-FS should be checked to ensure the performance matches the project requirement.

This can be carried out quickly onsite by checking the printing applied to the surface of the barrier, which details the fire performance.

Additionally the CCL CFSS-FS contains a QR code linking to the BSi. identify database where further installation and product guides may be found.



## HANDLING AND STORAGE



Products are supplied on showerproof shrink wrapped pallets, and should be stored in conditions out of direct sunlight and protected from the elements.

The factory packaging is intended for protection during shipment and for short term job site storage. It is not intended for protection against the elements during long term outside storage. For long term storage, we recommend the product is stored indoors, in a dry location with the factory packaging removed. Product should not be stored in areas that flood, that may result in the product standing in water. Product should be a minimum of 102 mm (4 inches) above dry ground and kept on a solid flat surface.

## DISCLAIMER

It is the responsibility of the customer to make the final choice when selecting products for use in construction projects. CCL provide data in good faith, however the information provided is not a recommendation and decisions are not carried out by CCL. Where relevant, CCL products should be installed in line with test certification and in build ups that match the specific test. In presenting any technical information we cannot claim to serve in any but an advisory capacity and can undertake no liability since the actual conditions and circumstance of use are beyond our control.

