

# PARTY WALL DPC

## HOUSING

Data Sheet 1011 v1.0.4

### Description:

Party Wall DPC consists of lengths of flexible mineral wool slab fully enclosed in polythene and bonded to 500 micron polyethylene damp proof course. The damp proof course has a 40mm flange on each long side and a 100mm flange on one end.

### Purpose:

Party Wall DPC is designed to minimise sound transmission and prevent fire penetration through the party wall cavity adjacent to separating floors and properties.

### Benefits:

- Fire, thermal and acoustic solution
- Simple to install
- Integral damp proof course
- Maintenance free

## SPECIFICATION



### Dimensions:

Insulation length: 1200mm Insulation width: 260mm / 300mm DPC length: 1300mm

DPC width: 340mm / 380mm

Insulation thickness: To suit cavities from 50mm to 150mm \*Other sizes can be manufactured to order.



### Standards & Performance:

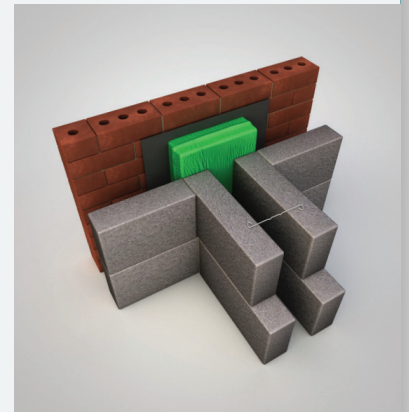
The mineral wool insulation achieves a fire classification of Euroclass A1 as defined in BS EN 13501-1.

The DPC conforms to BS6515 (1984).

The correct use of Party Wall DPC will exceed the requirement to provide a 30 minute cavity fire barrier as defined in Approved Document B of Building Regulations 2010 (2019) edition Table 3 of Appendix B.

The product has been independently tested adopting procedures and criteria from BS476: part 20: (1987) and achieved 1 hour fire resistance.

Party Wall DPC complies with the robust details accepted to provide a solution which satisfies the Approved Document E (2003 Edition) of the Building Regulations relating to the transmission of sound.



## FIXING



Party Wall DPC should be fitted during the brickwork / blockwork stage of the building process. The product should be fitted with the DPC against the inner face of the outer brickwork with the 40mm flanges on both sides.

During vertical applications each length should be installed with 100mm flange at the bottom, with the next length forming a close butt joint over the flange. During horizontal applications the product should be supported by the wall ties that join the inner and outer leaf and is protected from above by the cavity tray system.

# PARTY WALL DPC



CONCEPT CONVERSIONS LTD  
Fire, Acoustic & Thermal Insulation

## HOUSING

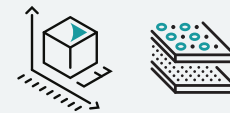
Data Sheet 1011 v1.0.4

### SPECIFICATION



Party Wall DPC is supplied in strong polyethylene outer bags and should be kept dry on site prior to installing. Due to the flexible nature of the product some local delamination may occur during handling. This, does not, however, detract from the performance of the product.

### DIMENSIONS, PERFORMANCE AND PACKING SPECIFICATION



Sleeve Colour	Product Dimensions (mm)	Cavity Width (mm)	Number Per Bag	Bags Per Pallet	Number Per Pallet	Fire Rating (Int/Ins) (E/I)
Orange	120mm x 300 x 1200	100 - 110	6	10	60	60 30
Orange	130mm x 300 x 1200	115 - 120	6	10	60	60 30
Orange	140mm x 300 x 1200	125 - 130	6	10	60	60 30
Orange	150mm x 300 x 1200	135 - 140	4	12	48	60 30
Orange	160mm x 300 x 1200	145 - 150	4	12	48	60 30



CONCEPT CONVERSIONS LTD  
Fire, Acoustic & Thermal Insulation

## PARTY WALL DPC

